

THE PALMETTO

3,394-3,647 Sq. Ft. | 4 Bedrooms | 2.5-3.5 Baths



H



E



F

* Stucco finish accents



G

* Stucco finish



B



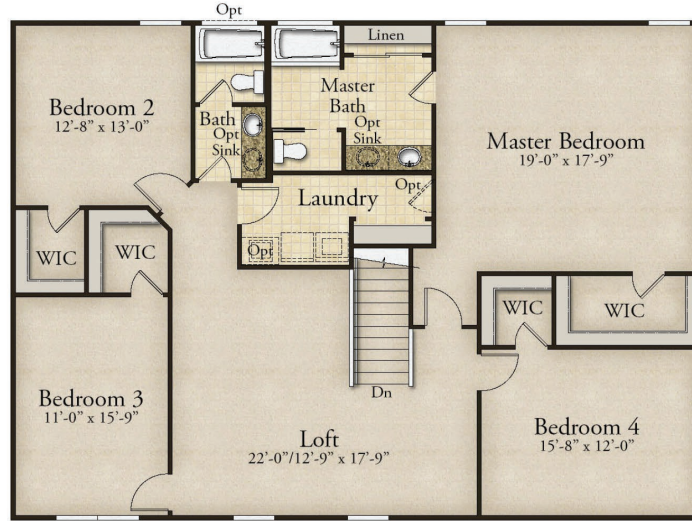
C



D

THE PALMETTO

3,394-3,647 Sq. Ft. | 4 Bedrooms | 2.5-3.5 Baths

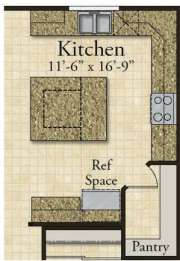
SECOND FLOOR PLANFIRST FLOOR PLAN**customize****YOUR LOMBARDO HOME**

Share your dreams with your sales manager!

Rev. 1/1/23. This depiction represents an artist's conception of the elevation and floor plan and is not intended to be an exact representation or show specific detailing. Plans remain subject to change without notice. Drawings are not to scale. All measurements shown are approximate and not necessarily to scale. Location, size and construction of doors, windows, wall, fireplaces and any other items depicted may vary depending on elevation preference or choice of options and are subject to change without notice. Some options and elevations shown may not be available in every neighborhood; see Sales Manager for details. Due to normal construction tolerances, the room sizes shown may vary slightly. The Builder may change home design, materials, features and methods of construction without prior notice. Model homes may contain some optional features not available through the Builder.



View our interactive design tool and floor plan options!



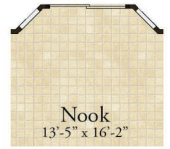
Kitchen Island

Built-In &
Chef's KitchenLuxury Built-In
& Chef's Kitchen
with Stone ArchSun Room
with Fireplace

Sun Room



Covered Patio



Nook Bay



Great Room Window Wall



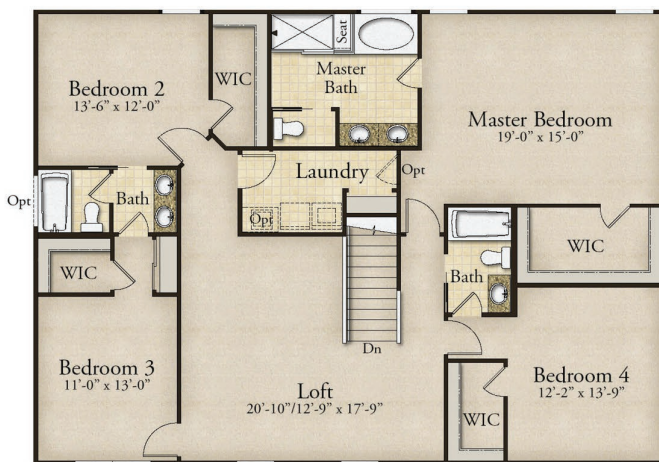
Great Room Bay



Great Room Fireplace



Covered Deck



Alternate Second Floor Layout

Master Bath with
Shower OnlyDeluxe
Master BathLuxury Master Bath
with Freestanding TubLuxury
Master Bath