

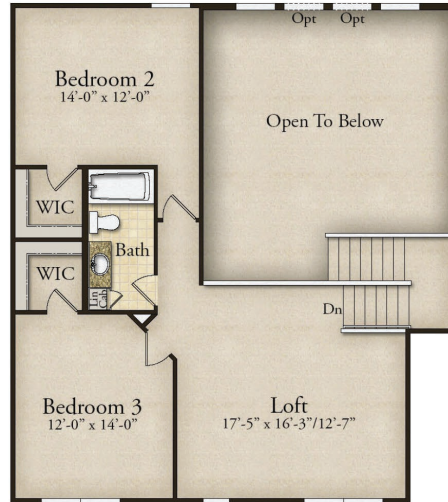
# THE SERENGETI

2,810-3,417 Sq. Ft. | 3-4 Bedrooms | 2.5-3.5 Baths



**THE SERENGETI**

2,810-3,417 Sq. Ft. | 3-4 Bedrooms | 2.5-3.5 Baths

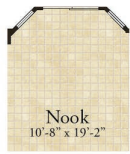
SECOND FLOOR PLANFIRST FLOOR PLAN**customize****YOUR LOMBARDO HOME**

Share your dreams with your sales manager!

**Rev. 1/1/23.** This depiction represents an artist's conception of the elevation and floor plan and is not intended to be an exact representation or show specific detailing. Plans remain subject to change without notice. Drawings are not to scale. All measurements shown are approximate and not necessarily to scale. Location, size and construction of doors, windows, wall, fireplaces and any other items depicted may vary depending on elevation preference or choice of options and are subject to change without notice. Some options and elevations shown may not be available in every neighborhood; see Sales Manager for details. Due to normal construction tolerances, the room sizes shown may vary slightly. The Builder may change home design, materials, features and methods of construction without prior notice. Model homes may contain some optional features not available through the Builder.


 View our interactive design  
 tool and floor plan options!





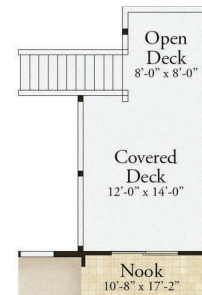
Nook Bay



Kitchen Island

Luxury Built-In  
& Chef's KitchenSun Room  
Fireplace

Sun Room



Covered Deck



Covered Patio

Great Room Fireplace  
with Built-Ins

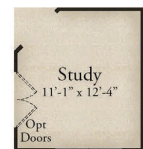
Great Room Fireplace



Great Room Bay



Window Wall



Study

Master Bath with  
Shower Only

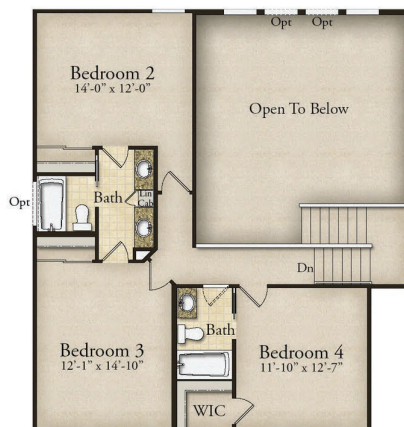
Luxury Master Bath



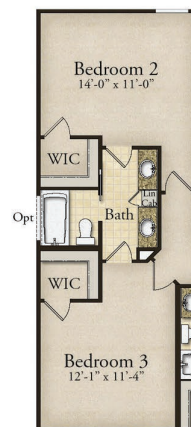
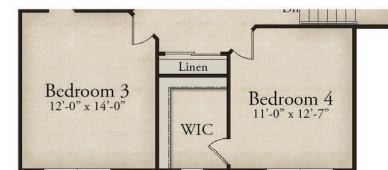
Deluxe Master Bath



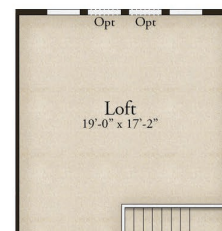
Master Bedroom Bay

Master Suite Walk-In  
Closet with Island

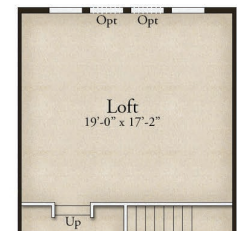
Alternate Second Floor Layout

Alternate Second Floor with  
Bedroom 2 & 3 Walk-In Closets

Bedroom 4



Loft



Step-Up Loft