

Traditions Series

# THE GLACIER

2,831-3,046 Sq. Ft. | 4 Bedrooms | 2.5-3.5 Baths



**THE GLACIER**

2,831-3,046 Sq. Ft. | 4 Bedrooms | 2.5-3.5 Baths

**customize**

YOUR LOMBARDO HOME

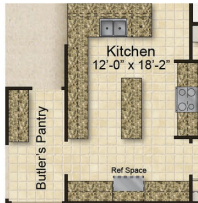
Share your dreams with your sales manager!

**Rev. 3/28/23.** This depiction represents an artist's conception of the elevation and floor plan and is not intended to be an exact representation or show specific detailing. Plans remain subject to change without notice. Drawings are not to scale. All measurements shown are approximate and not necessarily to scale. Location, size and construction of doors, windows, wall, fireplaces and any other items depicted may vary depending on elevation preference or choice of options and are subject to change without notice. Some options and elevations shown may not be available in every neighborhood; see Sales Manager for details. Due to normal construction tolerances, the room sizes shown may vary slightly. The Builder may change home design, materials, features and methods of construction without prior notice. Model homes may contain some optional features not available through the Builder.

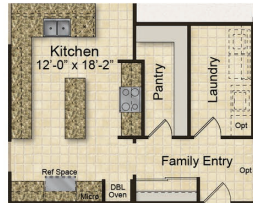


View our interactive design tool and floor plan options!

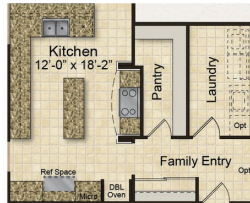




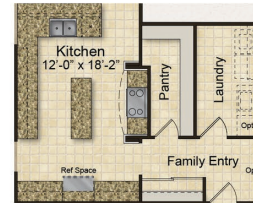
Butler's Pantry



Luxury Kitchen with  
Built-Ins / Chef's Kitchen



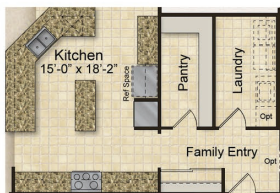
Luxury Kitchen with  
Built-Ins / Chef's Kitchen  
with Stone Arch



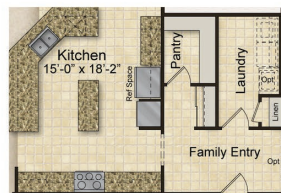
Chef's Kitchen with  
Stone Arch



Sun Room



Luxury Kitchen #2 with  
Built-Ins / Chef's Kitchen #2



Luxury Kitchen #2 with  
Built-Ins / Chef's Kitchen #2  
with Revised Family Entry



Nook Bay



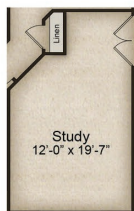
Cubbies



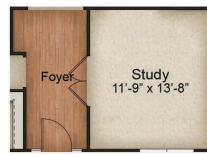
Great Room  
Corner Fireplace



Great Room  
Exterior Fireplace



Study ILO Bedroom 4  
(Shown with Opt.  
French Doors)



Study ILO Dining Room



Princess Suite



Master Bedroom Bay



Luxury Master Bath



Luxury Master Bath #2



Master Bath with Shower Only



Optional Master Bath  
Layout