

THE HARBOR

3,324-3,946 Sq. Ft. | 4 Bedrooms | 2.5-3.5 Baths



THE HARBOR

3,324-3,946 Sq. Ft. | 4 Bedrooms | 2.5-3.5 Baths



SECOND FLOOR PLAN



FIRST FLOOR PLAN

customize

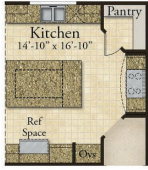
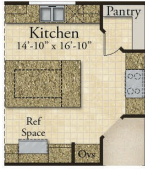
YOUR LOMBARDO HOME

Share your dreams with your sales manager!

Rev. 1/1/23. This depiction represents an artist's conception of the elevation and floor plan and is not intended to be an exact representation or show specific detailing. Plans remain subject to change without notice. Drawings are not to scale. All measurements shown are approximate and not necessarily to scale. Location, size and construction of doors, windows, wall, fireplaces and any other items depicted may vary depending on elevation preference or choice of options and are subject to change without notice. Some options and elevations shown may not be available in every neighborhood; see Sales Manager for details. Due to normal construction tolerances, the room sizes shown may vary slightly. The Builder may change home design, materials, features and methods of construction without prior notice. Model homes may contain some optional features not available through the Builder.



View our interactive design
tool and floor plan options!


**Chef's Kitchen
with Stone Arch**

**Luxury Kitchen
with Built-Ins &
Chef's Kitchen**

Nook Bay

**Sun Room
Fireplace**

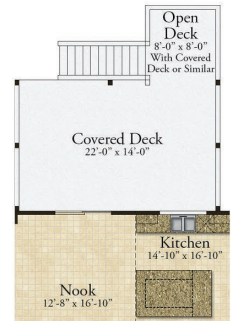
Sun Room

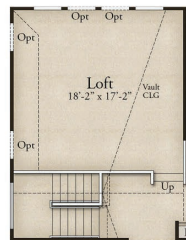
Covered Patio

Great Room Bay

Great Room Fireplace

Window Wall

**Master
Bedroom Bay**

Covered Deck

**Loft ILO 2-Story
Great Room**

**Stepped Loft ILO
2-Story Great Room**

**Master Bath with
Shower Only**

Luxury Master Bath

Half Round

Loft with 2-Story Great Room

Optional Second Floor Layout with Loft

Optional Second Floor Layout