

# THE RAINIER

3,346-4,137 Sq. Ft. | 4 Bedrooms | 2.5-3.5 Baths



H



E



F



G

\*Optional dormer shown.



B



C



D

# THE RAINIER

3,346-4,137 Sq. Ft. | 4 Bedrooms | 2.5-3.5 Baths



SECOND FLOOR PLAN



FIRST FLOOR PLAN

## customize

YOUR LOMBARDO HOME

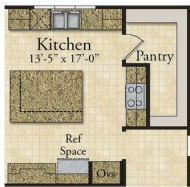
Share your dreams with your sales manager!

**Rev. 1/1/23.** This depiction represents an artist's conception of the elevation and floor plan and is not intended to be an exact representation or show specific detailing. Plans remain subject to change without notice. Drawings are not to scale. All measurements shown are approximate and not necessarily to scale. Location, size and construction of doors, windows, wall, fireplaces and any other items depicted may vary depending on elevation preference or choice of options and are subject to change without notice. Some options and elevations shown may not be available in every neighborhood; see Sales Manager for details. Due to normal construction tolerances, the room sizes shown may vary slightly. The Builder may change home design, materials, features and methods of construction without prior notice. Model homes may contain some optional features not available through the Builder.

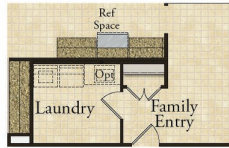


View our interactive design tool and floor plan options!

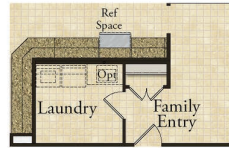




Luxury Kitchen  
with Built-Ins and  
Chef's Kitchen



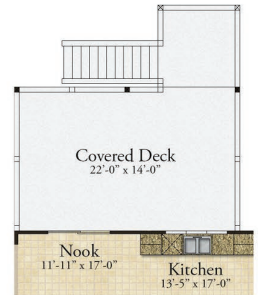
Butler's Pantry #1



Butler's Pantry #2



Covered Patio



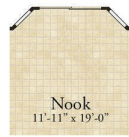
Covered Deck



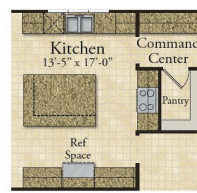
Sun Room  
Fireplace



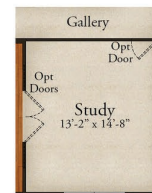
Sun Room



Nook Bay



Command Center



Study ILO  
Dining Room



Great Room Bay



Fireplace with  
Built-Ins



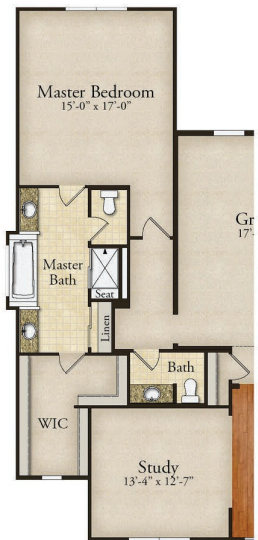
Fireplace



Master Bedroom Bay



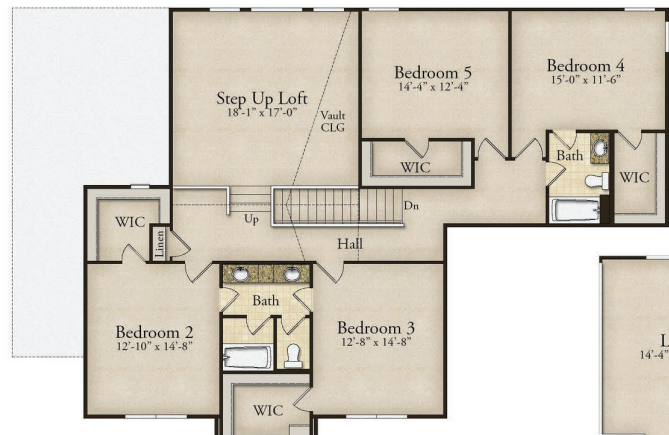
Luxury  
Master Bath



Study Wing



Optional Second Floor Layout #1



Optional Second Floor Layout #2



Loft ILO Attic